

St. Mary's Church, Reepham

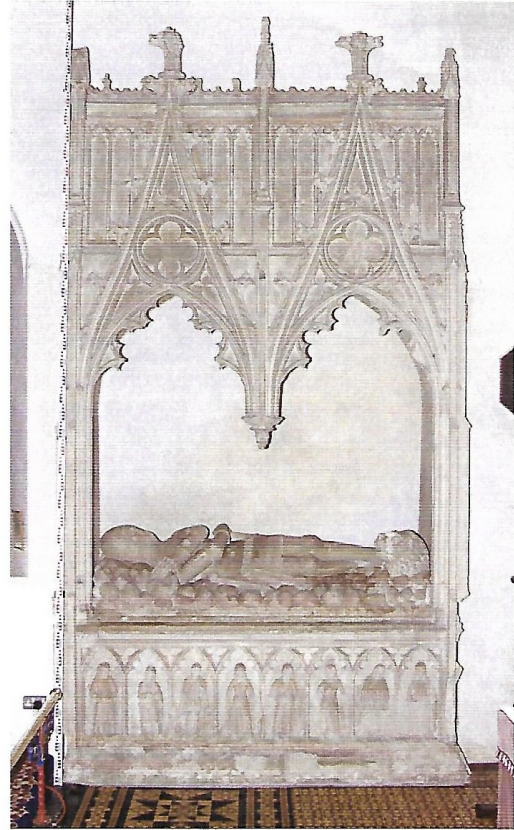
The Knight on a Bed of Stones

Illustrations used to accompany a survey made of the tomb during the years 2002 & 2005. The photographs were taken by Tobit Curteis Associates, Architectural Conservator, Cambridge. Clients include English Heritage, the National Trust & Historic Royal Palaces

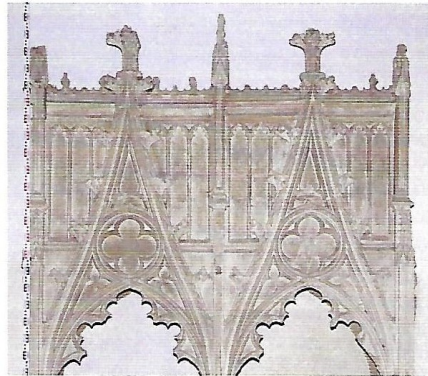
*St Mary's Church, Reepham*



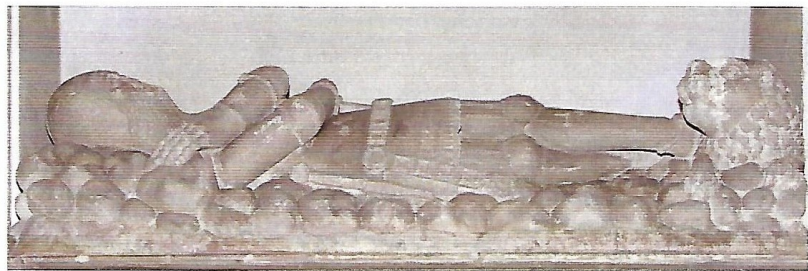
**Plate 1.** (Above)  
View of St Mary's  
Church from the  
north east,  
showing the  
approximate  
position of the  
tomb. (Photo: TCA  
2004)



**Plate 2.** (Right)  
General view of  
the tomb. (Photo:  
TCA 2004)

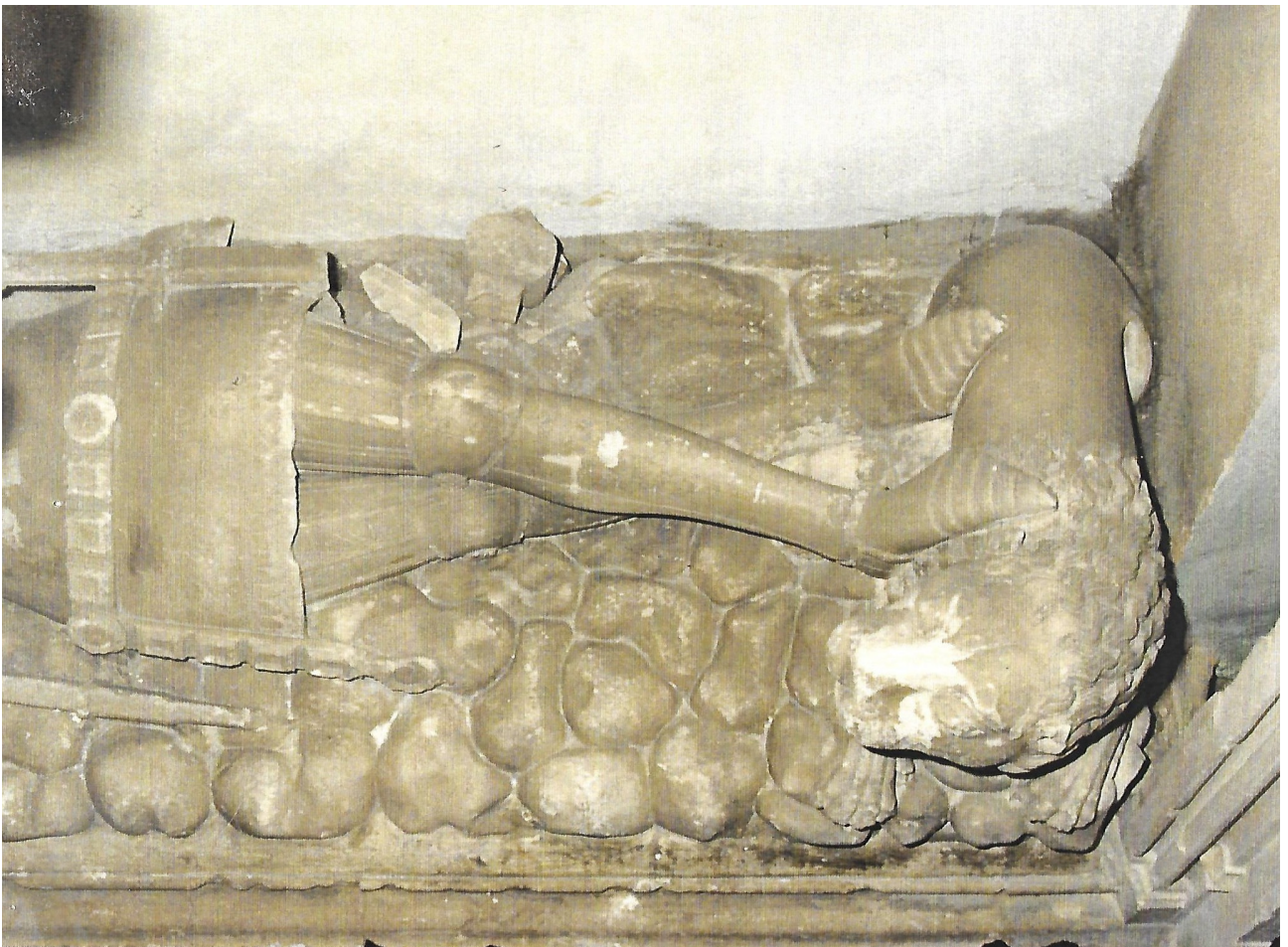


**Plates 3, 4 & 5.** (Right and above)  
Details of the effigy, the tomb  
chest and the canopy. (Photo: TCA  
2004)



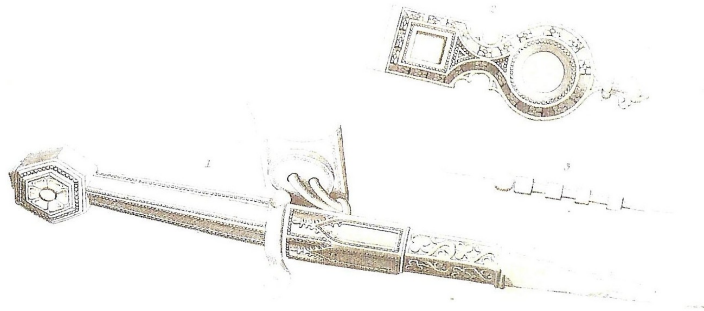
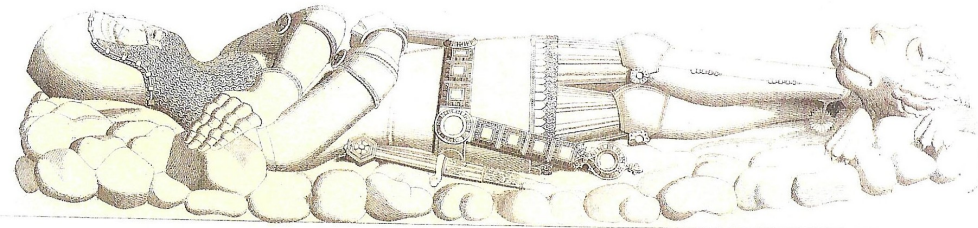


Head of the knight showing crossed arms.



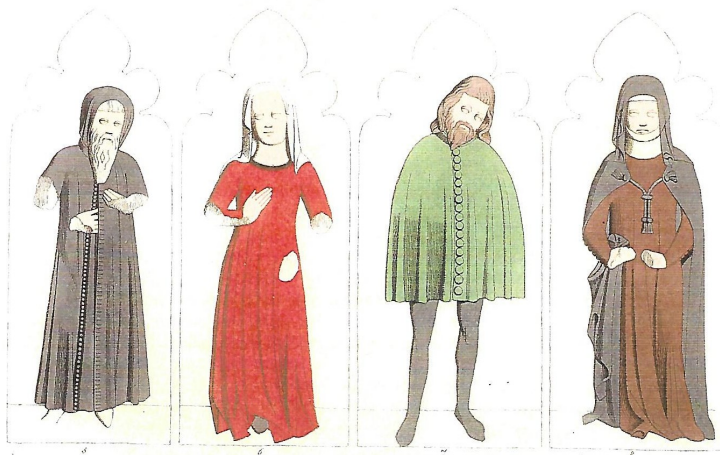
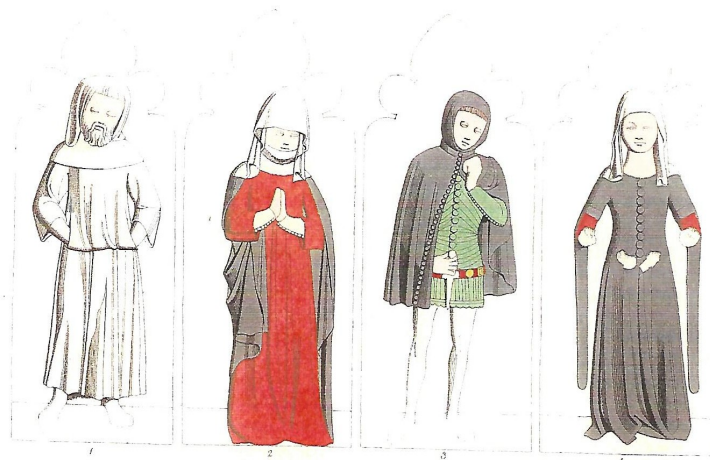
The knight's crossed legs with his feet resting on a lion.

Two illustrations from Charles Stothard's book published in 1817



SIR ROGER DE KERDISTON.

The weepers at the base of the tomb.



FIGURES ON THE TOMB OF SIR ROGER DE KERDISTON, REPRESENTING THE RELATIVES OF THE DECEASED.

7/4/15